

# Bruciatori di gasolio

## Light oil burners

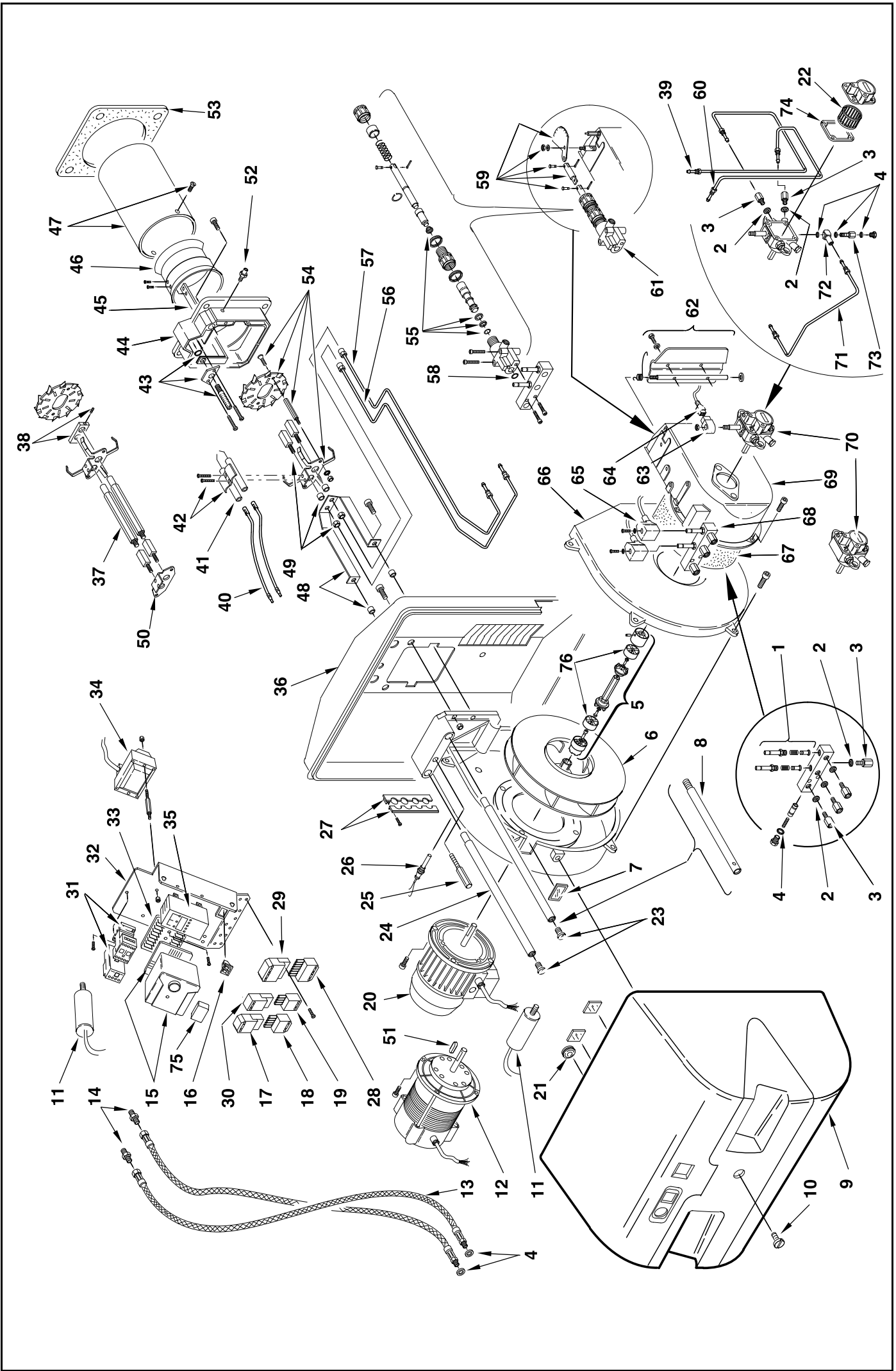
### Brûleurs fioul domestique

### Ölbrenner

### Quemadores de gasóleo

Funzionamento bistadio  
Two-stage operation  
Fonctionnement à deux allures  
Zweistufiger Betrieb  
Funcionamiento a dos llamas

COD.	TYP.	COD.	TYP.	MOD.
3473205	652 M	3473215	652 T1	RL 28
3473206	652 M	3473216	652 T1	RL 28
3473207	652 M	3473217	652 T1	RL 28
3473208	652 M	3473218	652 T1	RL 28
3474105	653 M	3474115	653 T1	RL 38
3474106	653 M	3474116	653 T1	RL 38
3474107	653 M	3474117	653 T1	RL 38
3474108	653 M	3474118	653 T1	RL 38
3474305	653 M	3474315	653 T1	RL 38
3474306	653 M	3474316	653 T1	RL 38
3474307	653 M	3474317	653 T1	RL 38
3474308	653 M	3474318	653 T1	RL 38
3474605	654 M	3474615	654 T1	RL 50
3474606	654 M	3474616	654 T1	RL 50
3474607	654 M	3474617	654 T1	RL 50
3474608	654 M	3474618	654 T1	RL 50



N.	COD.	652 M - 652 T1			653 M - 653 T1			654 M - 654 T1			DESCRIZIONE	DESCRIPTION	DESCRIPTION	BESCHREIBUNG	DENOMINACION	MATRICOLA BRUCIATORE BURNER SERIAL NUMBER MATRICULE BRULEUR BRENNER KENN-NUMMER MATRICULA QUEMADORES	RICAMBI CONSIGLIATI ADVISED PARTS RECHANGÉ CONSEIL EMPFOHLENE ERSATZTEILE RECAMBIOS ACONSEJADOS
		3473205-15	3473206-16*	3473207-17	3473208-18*	3474105-15	3474106-16*	3474107-17	3474108-18*	3474305-15							
1	3005733	•	•	•	•	•	•	•	•	•	VALVOLA	NEEDLE VALVE	ROBINET POINTEAU	NADELVENTIL	VÀLVULA		B
2	3007077	•	•	•	•	•	•	•	•	•	GUARNIZIONE	SEAL	RONDELLE	METALLDICHTUNG	JUNTA		A
3	3006719	•	•	•	•	•	•	•	•	•	RACCORDO	CONNECTOR	MAMELON	NIPPEL	RACORD		C
4	3007079	•	•	•	•	•	•	•	•	•	GUARNIZIONE	SEAL	RONDELLE	METALLDICHTUNG	JUNTA		A
5	3003758	•	•	•	•	•	•	•	•	•	GRUPPO GIUNZIONE	DRIVE COUPLING	ACCOUPLEMENT	KUPPLUNG	CONJUNTO		A
6	3003760	•	•	•	•	•	•	•	•	•	GIRANTE	FAN	TURBINE	GEBLÄSERAD	TURBINA		C
6	3003761	•	•	•	•	•	•	•	•	•	GIRANTE	FAN	TURBINE	GEBLÄSERAD	TURBINA		C
6	3003762	•	•	•	•	•	•	•	•	•	GIRANTE	FAN	TURBINE	GEBLÄSERAD	TURBINA		C
7	3003763	•	•	•	•	•	•	•	•	•	VISORE	INSPECTION WINDOW	VEISEUR	SICHTFENSTER	VISOR		
8	3003764	•	•	•	•	•	•	•	•	•	PROLUNGA PERNO	BAR EXTENSION	RALLONGE DE GLISSIERE	VERLÄNGERUNG	PROLUNGACION GUIA		
9	3003765	•	•	•	•	•	•	•	•	•	COFANO	COVER	COFFRET	VERKLEIDUNG	ENVOLVENTE		
10	3003766	•	•	•	•	•	•	•	•	•	VITE	SCREW	VIS	SCHRAUBE	TORNILLO		
11	3005285	•	•	•	•	•	•	•	•	•	CONDENSATORE	CONDENSER	CONDENSATEUR	KONDENSATOR	CONDENSADOR		B
11	3003767	•	•	•	•	•	•	•	•	•	CONDENSATORE	CONDENSER	CONDENSATEUR	KONDENSATOR	CONDENSADOR		B
12	3003768	•	•	•	•	•	•	•	•	•	MOTORE	MOTOR	MOTEUR	MOTOR	MOTOR		C
13	3003769	•	•	•	•	•	•	•	•	•	TUBO FLESSIBILE	FLEXIBLE OIL LINE	FLEXIBLE	SCHLAUCH	TUBO FLEXIBLE		A
14	3009068	•	•	•	•	•	•	•	•	•	RACCORDO	CONNECTOR	MAMELON	NIPPEL	RACORD		C
15	3003896	•	•	•	•	•	•	•	•	•	APPARECCHIATURA	CONTROL BOX	BOITE DE CONTROLE	STEUERGERÄT	CAJA CONTROL		B
16	3003770	•	•	•	•	•	•	•	•	•	INTERRUTTORE	SWITCH	INTERRUPTEUR	SCHALTER	INTERRUPTOR		C
17	3007434	•	•	•	•	•	•	•	•	•	PRESA 5 POLI	5 POLE SOCKET	PRISE 5 POLES	STECKERBUCHSE 5 POLEN	CON.MACHO DE 5CONTACTO		
18	3007589	•	•	•	•	•	•	•	•	•	SPINA 5 POLI	5 POLE PLUG	FICHE 5 POLES	STECKER 5 POLEN	CON.HEMBRA DE 5CONTACTO		
19	3006948	•	•	•	•	•	•	•	•	•	SPINA 4 POLI	4 POLE PLUG	FICHE 4 POLES	STECKER 4 POLEN	CON.HEMBRA DE 4CONTACTO		
20	3003771	•	•	•	•	•	•	•	•	•	MOTORE	MOTOR	MOTEUR	MOTOR	MOTOR		C
20	3003772	•	•	•	•	•	•	•	•	•	MOTORE	MOTOR	MOTEUR	MOTOR	MOTOR		C
20	3003773	•	•	•	•	•	•	•	•	•	MOTORE	MOTOR	MOTEUR	MOTOR	MOTOR		C
21	3007627	•	•	•	•	•	•	•	•	•	MEMBRANA	MEMBRAN	MEMBRANE	MEMBRANE	MEMBRANA		
22	3003082	•	•	•	•	•	•	•	•	•	FILTRO	FILTER	FILTRE	PUMPENFILTER	FILTRO		B
23	3003776	•	•	•	•	•	•	•	•	•	VITE	SCREW	VIS	SCHRAUBE	TORNILLO		
24	3003777	•	•	•	•	•	•	•	•	•	PERNO	BAR	GLISSIERE	BOLZEN	PERNO		C
25	3003778	•	•	•	•	•	•	•	•	•	ALBERINO	SHORT SHAFT	AXE	KLEINWELLE	ÁRBORILLO		
26	3003779	•	•	•	•	•	•	•	•	•	FOTORESISTENZA	P.E. CELL	CELLULE	FOTOWIDERSTAND	FOTORESISTENCIA		A
27	3003780	•	•	•	•	•	•	•	•	•	PASSACAVO	FAIRLEAD	PASSE-CABLE	KABELDURCHGANG	PASACABLES		
28	3006937	•	•	•	•	•	•	•	•	•	SPINA 7 POLI	7 POLE PLUG	FICHE 7 POLES	STECKER 7 POLEN	CON.HEMBRA DE 7CONTACTO		
29	3006938	•	•	•	•	•	•	•	•	•	PRESA 7 POLI	7 POLE SOCKET	PRISE 7 POLES	STECKERBUCHSE 7 POLEN	CON.MACHO DE 7CONTACTO		
30	3006949	•	•	•	•	•	•	•	•	•	PRESA 4 POLI	4 POLE SOCKET	PRISE 4 POLES	STECKERBUCHSE 4 POLEN	CON.MACHO DE 7CONTACTO		
31	3003781	•	•	•	•	•	•	•	•	•	AVVIATORE	STARTER	DEMARREUR	ANLASSER	ARRANCADOR		C
31	3003782	•	•	•	•	•	•	•	•	•	AVVIATORE	STARTER	DEMARREUR	ANLASSER	ARRANCADOR		C
32	3003783	•	•	•	•	•	•	•	•	•	SUPPORTO	SUPPORT	SUPPORT	HALTER	SOPORTE		
33	3003784	•	•	•	•	•	•	•	•	•	MORSETTIERA	CONTROL BOX BASE	SOCLE	STECKSOCKEL	ZOCALO CAJA CONTROL		
34	3003785	•	•	•	•	•	•	•	•	•	TRASFORMATORE	TRANSFORMER	TRANSFORMATEUR	ZÜNDTRANSFORMATOR	TRANSFORMADOR		B
35	3003786	•	•	•	•	•	•	•	•	•	STATUS	STATUS	STATUS	STATUS	STATUS		C
35	3003787	•	•	•	•	•	•	•	•	•	LED PANEL	LED PANEL	LED PANEL	LED PANEL	LED PANEL		C
36	3003788	•	•	•	•	•	•	•	•	•	SCUDO ANTERIORE	FRONT SHIELD	BOUCLIER AVANT	VORDERES SCHILD	PROTECCION		
37	3003789	•	•	•	•	•	•	•	•	•	PROLUNGA	EXTENSION	RALLONGE	VERLÄNGERUNG	PROLONGACIÓN		

N.	COD.	652 M - 652 T1				653 M - 653 T1				654 M - 654 T1				DESCRIZIONE	DESCRIPTION	DESCRIPTION	BESCHREIBUNG	DENOMINACION	MATRICOLA BRUCIATORE BURNER SERIAL NUMBER MATRICULE BRULEUR BRENNER KENN-NUMMER MATRICULA QUEMADORES	RICAMBI CONSIGLIATI ADVISED PARTS RECHANGE CONSEIL EMPFOHLENE ERSATZTEILE RECAMBIOS ACONSEJADOS
		3473205 - 15	3473206 - 16*	3473207 - 17	3473208 - 18*	3474105 - 15	3474106 - 16*	3474107 - 17	3474108 - 18*	3474305 - 15	3474306 - 16*	3474307 - 17	3474308 - 18*							
38	3003790	●	●	●	●	●	●	●	●	●	●	●	●	PIASTRA	ANCHOR PLATE	PLATINE DE BLOCAGE	ARRETIERPLATTE	PLACA		
39	3003837	●	●	●	●	●	●	●	●	●	●	●	●	TUBO	TUBE	TUYAUTERIE	DRUCKROHR	TUBO		
40	3003794	●	●	●	●	●	●	●	●	●	●	●	●	COLLEGAMENTO	H.T. LEAD	CABLE H.T.	ZÜNDKABEL	CABLES ELECTRODOS		A
40	3003795	●	●	●	●	●	●	●	●	●	●	●	●	COLLEGAMENTO	H.T. LEAD	CABLE H.T.	ZÜNDKABEL	CABLES ELECTRODOS		A
41	3003796	●	●	●	●	●	●	●	●	●	●	●	●	ELETTRODO	ELECTRODE	ELECTRODE PORCELAINE	ELEKTRODE	ELECTRODO		A
42	3003495	●	●	●	●	●	●	●	●	●	●	●	●	CAVALLOTTO	U BOLT	CAVALIER	BÜGELBOLZEN	FIJACION ELECTRODO		
43	3003797	●	●	●	●	●	●	●	●	●	●	●	●	GRUPPO REGOLATORE	CONTROL DEVICE	GROUPE OBTURATION	DRUCKREGULIERUNG	GRUPO REGULACION		
44	3003798	●	●	●	●	●	●	●	●	●	●	●	●	FRONTONE	FRONT PIECE	FACADE	VORDERTEIL	SOPORTE QUEMADOR		
44	3003838	●	●	●	●	●	●	●	●	●	●	●	●	FRONTONE	FRONT PIECE	FACADE	VORDERTEIL	SOPORTE QUEMADOR		
45	3003799	●	●	●	●	●	●	●	●	●	●	●	●	SQUADRETTA	SQUARE	EQUERRE-SUPPORT	HALTER	ESCUADRA		
45	3003800	●	●	●	●	●	●	●	●	●	●	●	●	SQUADRETTA	SQUARE	EQUERRE-SUPPORT	HALTER	ESCUADRA		
45	3003801	●	●	●	●	●	●	●	●	●	●	●	●	SQUADRETTA	SQUARE	EQUERRE-SUPPORT	HALTER	ESCUADRA		
45	3003802	●	●	●	●	●	●	●	●	●	●	●	●	SQUADRETTA	SQUARE	EQUERRE-SUPPORT	HALTER	ESCUADRA		
45	3003803	●	●	●	●	●	●	●	●	●	●	●	●	SQUADRETTA	SQUARE	EQUERRE-SUPPORT	HALTER	ESCUADRA		
45	3003804	●	●	●	●	●	●	●	●	●	●	●	●	SQUADRETTA	SQUARE	EQUERRE-SUPPORT	HALTER	ESCUADRA		
46	3003805	●	●	●	●	●	●	●	●	●	●	●	●	OTTURATORE	SHUTTER	OBTURATEUR	SCHIEBER	OBTURADOR		C
46	3003806	●	●	●	●	●	●	●	●	●	●	●	●	OTTURATORE	SHUTTER	OBTURATEUR	SCHIEBER	OBTURADOR		C
47	3003807	●	●	●	●	●	●	●	●	●	●	●	●	IMBUTO FIAMMA	END CONE	EMBOUT GUEULARD	FLAMMENROHR	TUBO EXTREMO		B
47	3003808	●	●	●	●	●	●	●	●	●	●	●	●	IMBUTO FIAMMA	END CONE	EMBOUT GUEULARD	FLAMMENROHR	TUBO EXTREMO		B
47	3003809	●	●	●	●	●	●	●	●	●	●	●	●	IMBUTO FIAMMA	END CONE	EMBOUT GUEULARD	FLAMMENROHR	TUBO EXTREMO		B
47	3003810	●	●	●	●	●	●	●	●	●	●	●	●	IMBUTO FIAMMA	END CONE	EMBOUT GUEULARD	FLAMMENROHR	TUBO EXTREMO		B
47	3003811	●	●	●	●	●	●	●	●	●	●	●	●	IMBUTO FIAMMA	END CONE	EMBOUT GUEULARD	FLAMMENROHR	TUBO EXTREMO		B
47	3003812	●	●	●	●	●	●	●	●	●	●	●	●	IMBUTO FIAMMA	END CONE	EMBOUT GUEULARD	FLAMMENROHR	TUBO EXTREMO		B
48	3003813	●	●	●	●	●	●	●	●	●	●	●	●	SUPPORTO	SUPPORT	SUPPORT	HALTER	SOPORTE		
49	3003814	●	●	●	●	●	●	●	●	●	●	●	●	PORTASPRUZZO	NOZZLE HOLDER	PULVERISATEUR	DÜSENSTOCK	PORTABOQUILLA		C
50	3003815	●	●	●	●	●	●	●	●	●	●	●	●	SUPPORTO	SUPPORT	VERISATEUR	HALTER	SOPORTE		
51	3003816	●	●	●	●	●	●	●	●	●	●	●	●	CHIAVETTA	KEY	CLAVETTE	PASSFEDER	CHAVETA		
52	3003893	●	●	●	●	●	●	●	●	●	●	●	●	GRUPPOMISURAZIONE	TEST POINT	PRISE DE PRESSION	MESSNIPPEL	GRUPO TOMA DE PRESIÓN		
53	3003817	●	●	●	●	●	●	●	●	●	●	●	●	SCHERMO	FLANGE GASKET	ECRAN THERMIQUE	FLANSCHDICHTUNG	JUNTA AISLANTE		
54	3003791	●	●	●	●	●	●	●	●	●	●	●	●	ELICA	DIFFUSER DISC	ACCROCHE FLAMME	STAUISCHEIBE	DISCO ESTABILIZADOR		A
54	3003792	●	●	●	●	●	●	●	●	●	●	●	●	ELICA	DIFFUSER DISC	ACCROCHE FLAMME	STAUISCHEIBE	DISCO ESTABILIZADOR		A
54	3003793	●	●	●	●	●	●	●	●	●	●	●	●	ELICA	DIFFUSER DISC	ACCROCHE FLAMME	STAUISCHEIBE	DISCO ESTABILIZADOR		A
55	3003820	●	●	●	●	●	●	●	●	●	●	●	●	ANELLO	PISTON SEAL	JOINT TORIQUE	LIPPENDICHTUNG	ANILLO		B
56	3003821	●	●	●	●	●	●	●	●	●	●	●	●	TUBO	TUBE	TUYAUTERIE	DRUCKROHR	TUBO		
57	3003822	●	●	●	●	●	●	●	●	●	●	●	●	TUBO	TUBE	TUYAUTERIE	DRUCKROHR	TUBO		
58	3003823	●	●	●	●	●	●	●	●	●	●	●	●	ANELLO	PISTON SEAL	JOINT TORIQUE	LIPPENDICHTUNG	ANILLO		B
59	3003824	●	●	●	●	●	●	●	●	●	●	●	●	QUADRANTE	GRADUATE SECTOR	SECTEUR GRADUE	SKALENSEGMENT	SECTOR GRADUADO		
60	3003774	●	●	●	●	●	●	●	●	●	●	●	●	TUBO	TUBE	TUYAUTERIE	DRUCKROHR	TUBO		
61	3003825	●	●	●	●	●	●	●	●	●	●	●	●	MARTINETTO	HYDRAULIC JACK	VERIN AIR	LUFTKLAPPEDRUCKKOLBEN	HIDRÀULICO DE AIRE		C
62	3003826	●	●	●	●	●	●	●	●	●	●	●	●	GRUPPO SERRANDA	AIR DAMPER ASSEMBLY	GROUPE VOLET AIR	LUFTKLAPPE	CONJUNTO REGISTRO AIRE		B
63	3003594	●	●	●	●	●	●	●	●	●	●	●	●	BOBINA	COIL	BOBINE E.V.	MV-SPULE	BOBINA		
64	3003827	●	●	●	●	●	●	●	●	●	●	●	●	COLLEGAMENTO	LEAD	CONNEXION	VERBINDUNG	CABLE CONEXION		
65	3003828	●	●	●	●	●	●	●	●	●	●	●	●	BOBINA	COIL	BOBINE E.V.	MV-SPULE	BOBINA		B
66	3003829	●	●	●	●	●	●	●	●	●	●	●	●	GUSCIO	HALF-SHELL	COUVERCLE	HAUBE	CÀSCARA		

N.	COD.	652 M - 652 T1			653 M - 653 T1					654 M - 654T1			DESCRIZIONE	DESCRIPTION	DESCRIPTION	BESCHREIBUNG	DENOMINACION	MATRICOLA BRUCIATORE BURNER SERIAL NUMBER MATRICULE BRULEUR BRENNER KENN-NUMMER MATRICULA QUEMADORES	RICAMBI CONSIGLIATI ADVISED PARTS RECHARGE CONSEIL EMPFOHLENE ERSATZTEILE RECAMBIOS ACONSEJADOS	
		3473205 - 15	3473206 - 16*	3473207 - 17	3473208 - 18*	3474105 - 15	3474106 - 16*	3474107 - 17	3474108 - 18*	3474305 - 15	3474306 - 16*	3474307 - 17								3474308 - 18*
67	3003830	●	●	●	●	●	●	●	●	●	●	●	●	FONOASSORBENTE	SOUND DAMPING	INSONORISANT	GERÄUSCHDÄMMUNG	AISLAMIENTO ACÚSTICO		
68	3003831	●	●	●	●	●	●	●	●	●	●	●	●	GRUPPO VALVOLE	VALVE ASSEMBLY	GROUPE ELECTROVANNE	MAGNETVENTILBLOCK	GRUPO VÁLVULA		B
69	3003832	●	●	●	●	●	●	●	●	●	●	●	●	BOCCA D'ASPIRAZIONE	AIR INTAKE	BOITIER D'ASPIRATION	ANSAUGÖFFNUNG	BOCA ASPIRACION		
70	3003833	●	●	●	●	●	●	●	●	●	●	●	●	POMPA	PUMP	POMPE	PUMPE	BOMBA		C
70	3003834	●	●	●	●	●	●	●	●	●	●	●	●	POMPA	PUMP	POMPE	PUMPE	BOMBA		C
70	3003835	●	●	●	●	●	●	●	●	●	●	●	●	POMPA	PUMP	POMPE	PUMPE	BOMBA		C
71	3003836	●	●	●	●	●	●	●	●	●	●	●	●	TUBO	TUBE	TUYAUTERIE	DRUCKROHR	TUBO		
72	3006784	●	●	●	●	●	●	●	●	●	●	●	●	RACCORDO	CONNECTOR	MAMELON	NIPPEL	RACORD		C
73	3005804	●	●	●	●	●	●	●	●	●	●	●	●	PERNO	SCREW	VIS CREUSE	HOHLKERNSCHRAUBE	PERNO		C
74	3006788	●	●	●	●	●	●	●	●	●	●	●	●	GUARNIZIONE	SEAL	JOINT COUVERCLE POMPE	DICHTUNG	JUNTA		B
75	3012160	●	●	●	●	●	●	●	●	●	●	●	●	FILTRO ANTIDISTURBO	DEGLITCHER	FILTRE	ENTSTÖRER	FILTRO ANTI-INTERFERENCIA		
75	3012155	●	●	●	●	●	●	●	●	●	●	●	●	FILTRO ANTIDISTURBO	DEGLITCHER	FILTRE	ENTSTÖRER	FILTRO ANTI-INTERFERENCIA		
76	3012622	●	●	●	●	●	●	●	●	●	●	●	●	FILTRO ANTIDISTURBO	DEGLITCHER	FILTRE	ENTSTÖRER	FILTRO ANTI-INTERFERENCIA		

\* = Versione Testa Lunga - Long Combustion Head Version - Version Tête Longue - Langer Brennkopf Ausführung - Version alargado de tubo llama

\*\*

A = Ricambi per dotazione minima - Spare parts for minimum fittings - Pièces détachées pour équipement minimum - Ersatzteile für minimale Ausstattung - Recambios para equipamiento mínimo

A+B = Ricambi per dotazione base di sicurezza - Spare parts for basic safety fittings - Pièces détachées pour équipement standard de sécurité - Ersatzteile für Sicherheitsgrundausrüstung - Recambios para equipamiento básico de seguridad

A+B+C = Ricambi per dotazione estesa di sicurezza - Spare parts for extended safety fittings - Pièces détachées pour équipement complet de sécurité - Ersatzteile für erweiterte Sicherheitsausstattung - Recambios para equipamiento general de seguridad







RIELLO S.p.A.  
Via degli Alpini 1  
I - 37045 Legnago (VR)  
Tel.: +39.0442.630111 Fax: +39.0442.22378  
[http:// www.riello.it](http://www.riello.it)